

# Screening Targets

## A Collection of AM and FM Screening

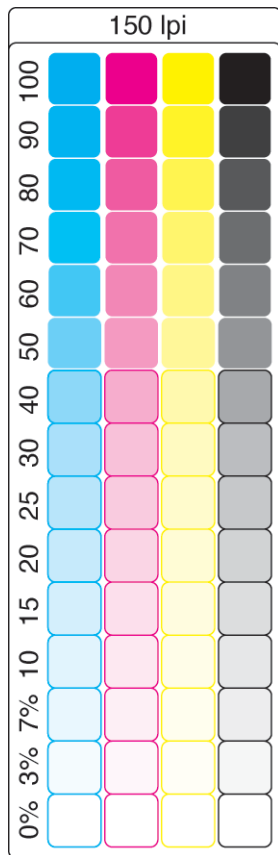
**ID** TF\_04  
**Version** v2.2  
**Prod. Date**  
**Notes**

RIP Information:  
 Mac Distiller  
 600 spi, 42.3 μ/spot  
 PS Version: 3011.104  
 PS Language Level: 3

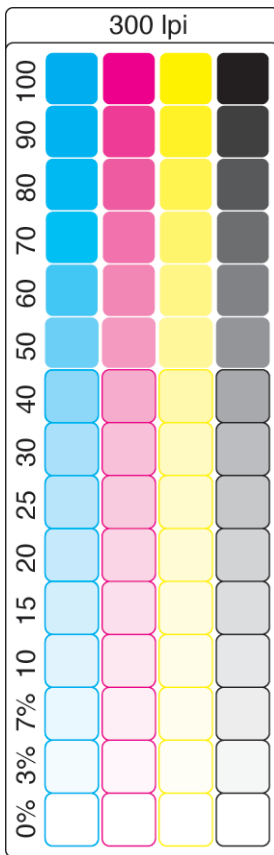
**Press**  
**Paper**  
**Prepress**



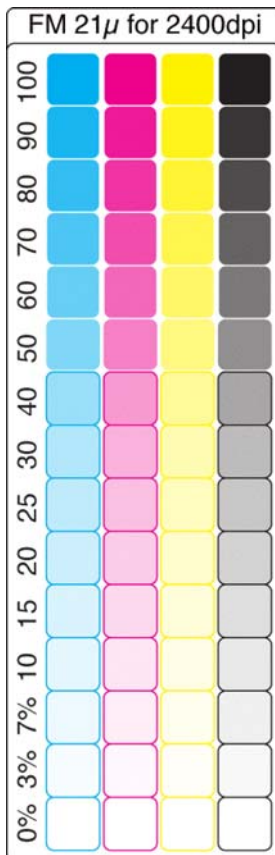
DG4CE11U.EPS



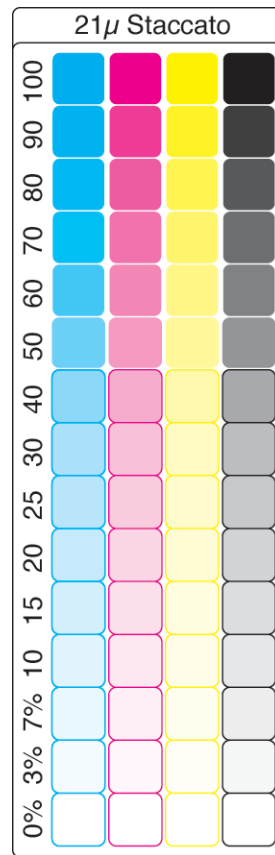
150lpi\_15step.eps



300lpi\_15step.eps

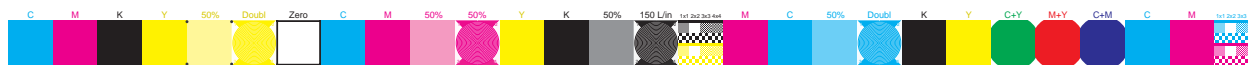


FM21μ/2400dpi\_15step.velvet



Creo Staccato 21μ\_15step.eps

**Note:**  
 These are Photoshop EPS files with imbedded screening. Some RIP's override these requests and default to their own screening. FM scales were produced using Ugra Velvet screening and Creo Staccato FM screening.



P4BAR03U.EPS



GCRBAR3U.EPS